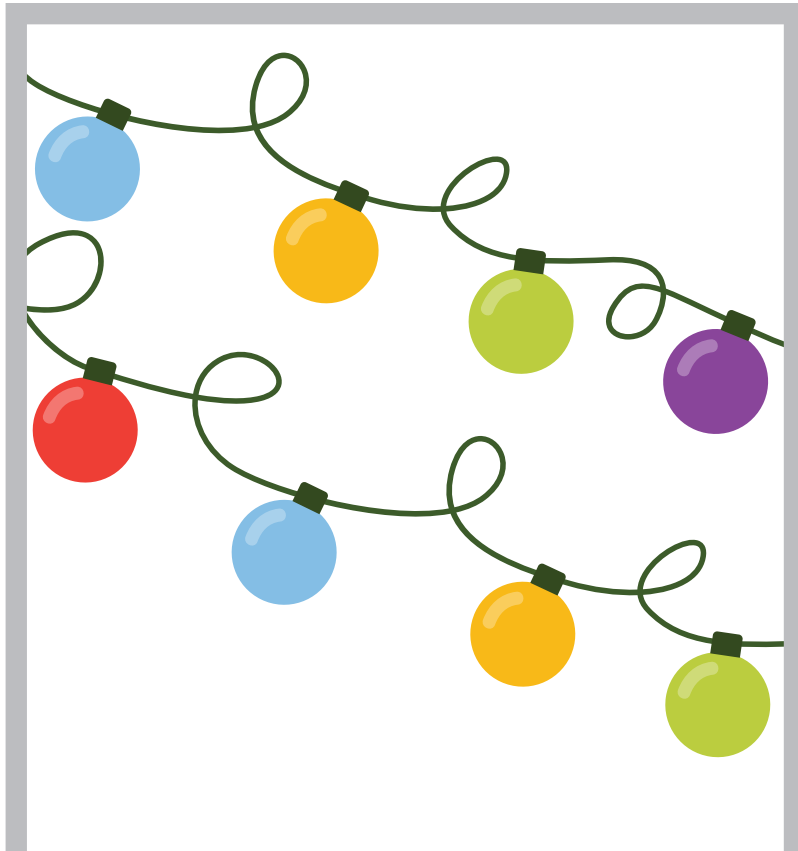




Cut out the cards. Place a peg on the correct answer.

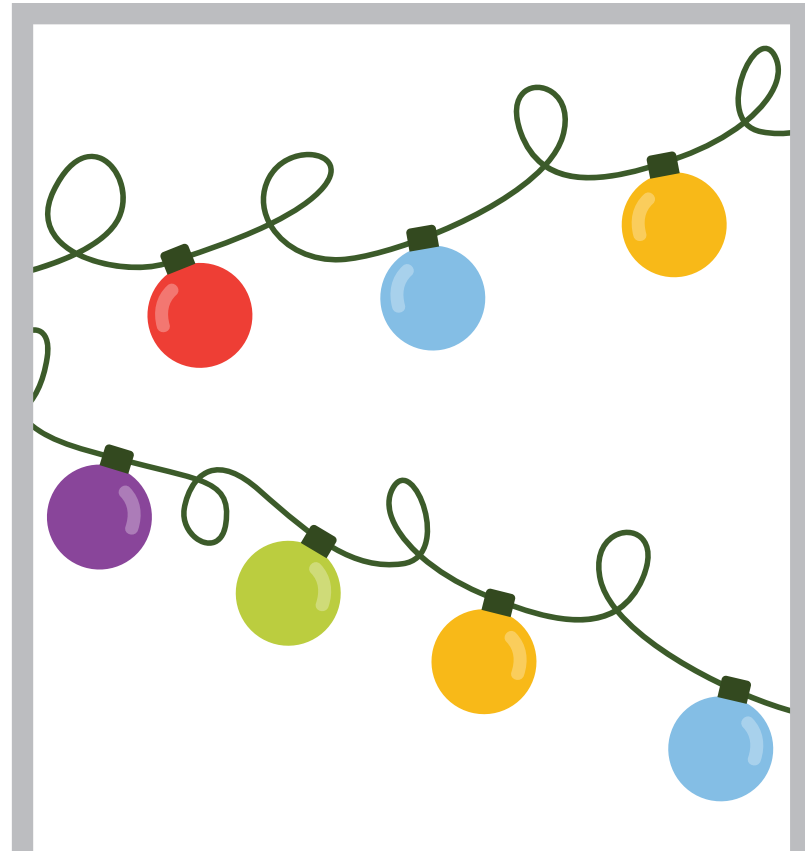


How many Christmas lights can you count?

8

6

7



How many Christmas lights can you count?

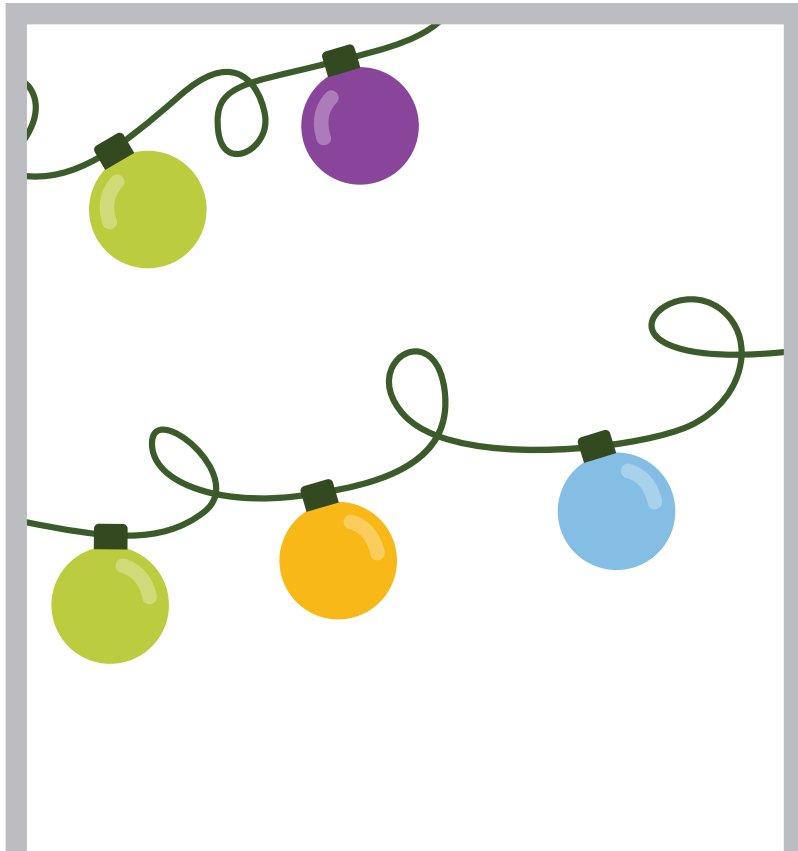
6

5

7



Cut out the cards. Place a peg on the correct answer.

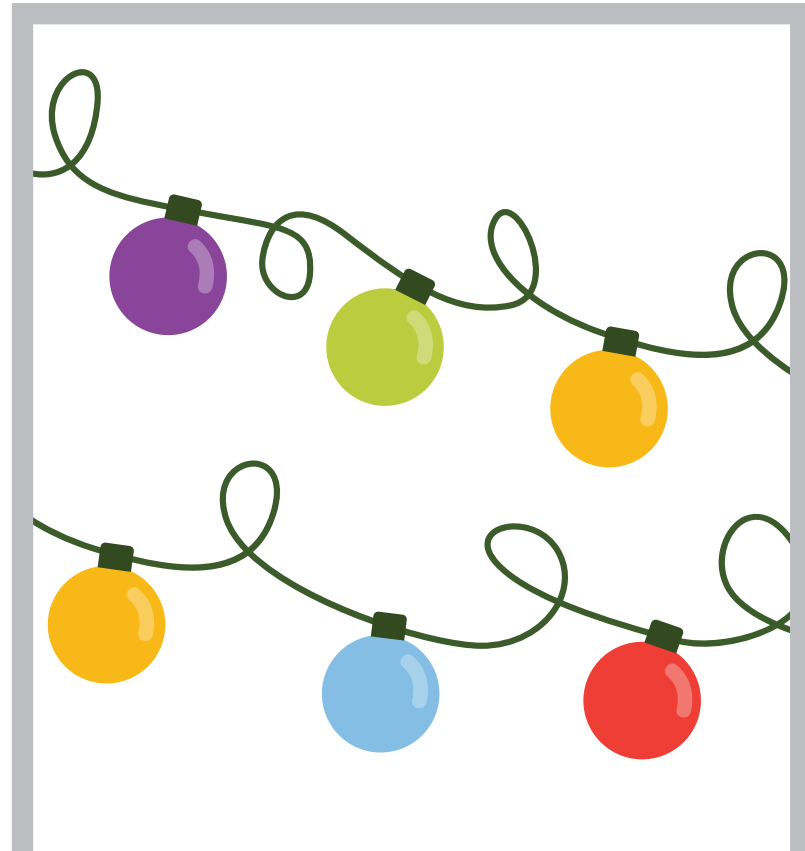


How many Christmas lights can you count?

4

6

5



How many Christmas lights can you count?

7

6

8



Cut out the cards. Place a peg on the correct answer.



How many Christmas lights can you count?

10	9	8
----	---	---

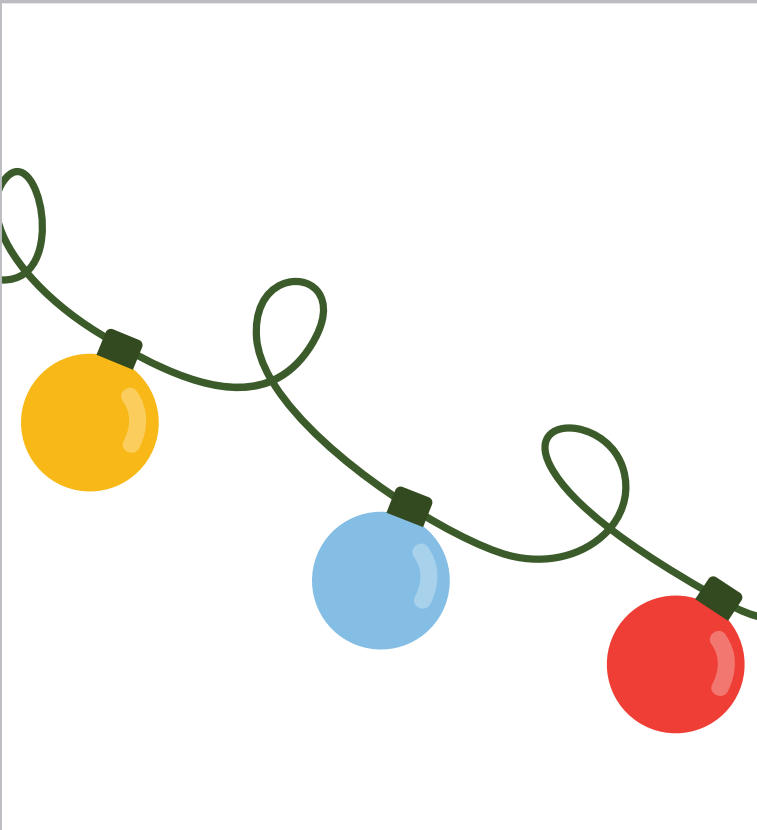


How many Christmas lights can you count?

9	8	7
---	---	---



Cut out the cards. Place a peg on the correct answer.



How many Christmas lights can you count?

1	2	3
---	---	---



How many Christmas lights can you count?

3	4	5
---	---	---